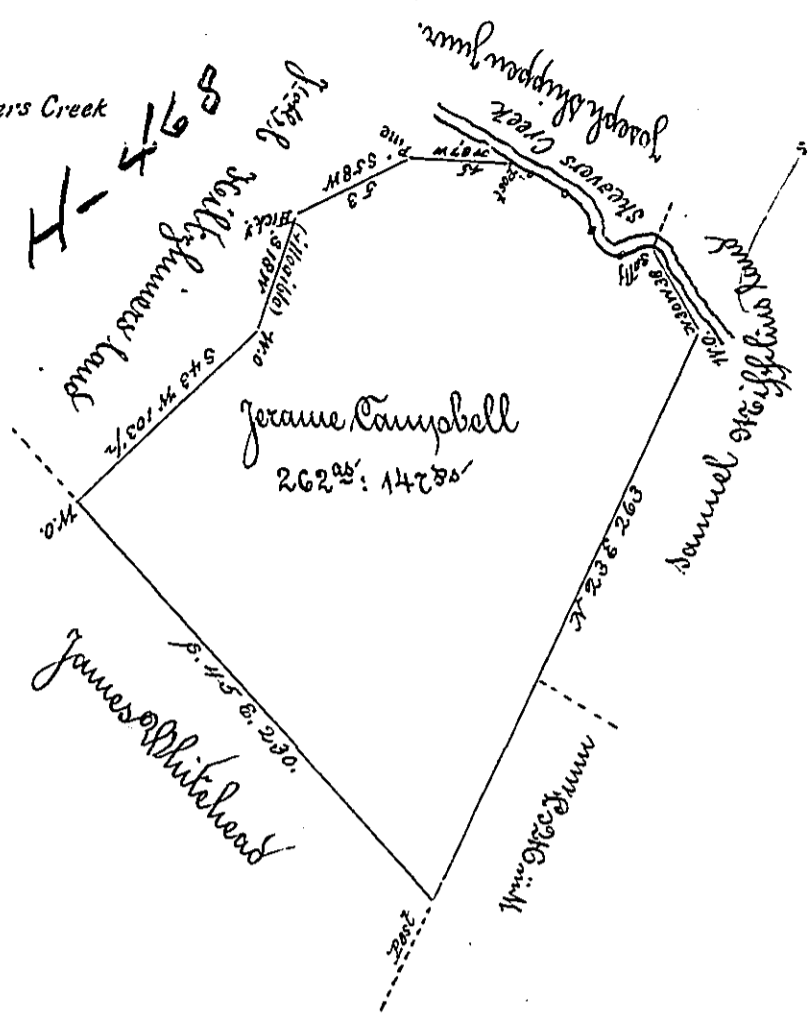


Courses & Distances up Sheavers Creek
From the Sally to the Post

N 88 W	20 1/2
N 38 W	30
N 66 W	24
N 35 W	7
<hr/>	
	81 1/2



Situate on Sheavers Creek about two miles below the Warm Springs in the Township of County
 of Huntingdon containing 262 2/3' 147 5/8' and the usual allowance surveyed the 12th day of May 1789
 in pursuance of a Warrant dated the 22^d day of November 1784

To John Kuhens Esq: S. G.

John Coman D. S.

IN TESTIMONY that the above is a copy of the original remaining on file in
 the Department of Internal Affairs of Pennsylvania, made
 conformably to an Act of Assembly approved the 16th day of
 February, 1833, I have hereunto set my Hand and caused
 the Seal of said Department to be affixed at Harrisburg,
 this sixth day of November 1900.

James W. Latta
 Secretary of Internal Affairs.